



Phius Project Details Library

Itinerary

- What is the Phius Project Details Library?
- What is its purpose?
- What were the guidelines in choosing the details?
- How to navigate to and through the Details Library
- Future Project Details

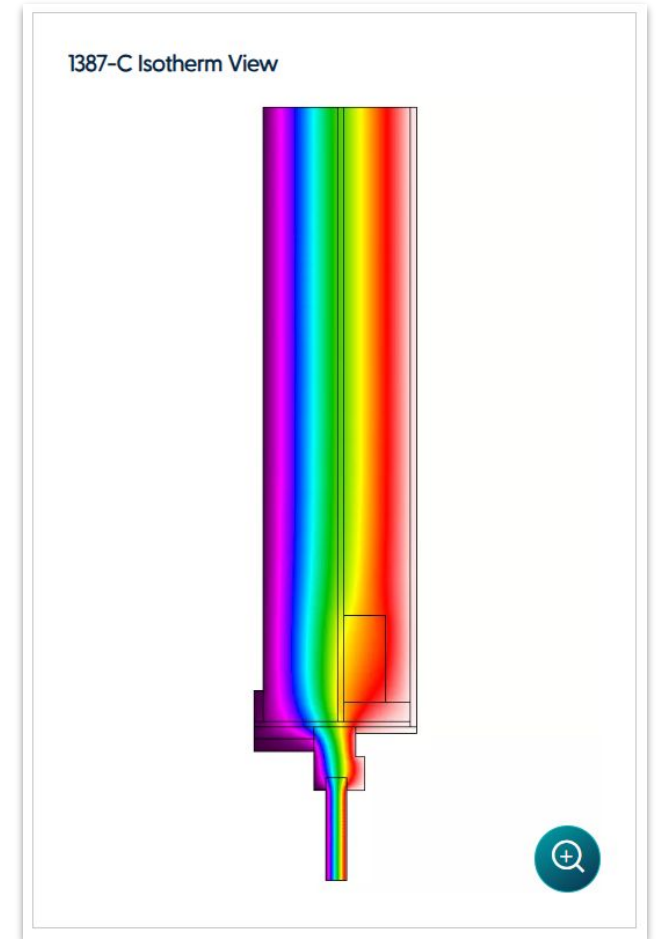
What is the Phius Project Details Library?

- A tool showcasing prime examples of successful building details and connections
 - Designed and built
- Various types of details
 - Foundation-to-wall
 - Window header
 - Roof-to-wall



Guidelines

- Phius Certified Buildings
 - Not only are these details successful on paper, but also in practice!
- Avoid Red-Flag Issue
 - Thermal bridge risks
 - Hygrothermal concerns
- All Building Types
 - Single-Family
 - Multifamily
 - Commercial



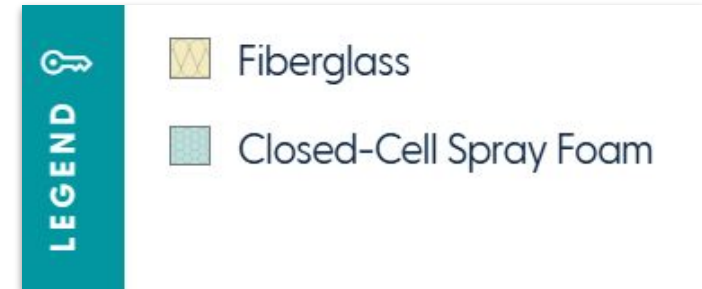
Purpose

- A Learning Tool
 - Use these examples as a **starting point** for:
 - Innovating a new detail connection
 - Avoiding thermal bridges/hygrothermal risks
 - Compare details based on:
 - Climate zone
 - Construction type
 - Building function
- Determine what's best for your **specific** project



Purpose

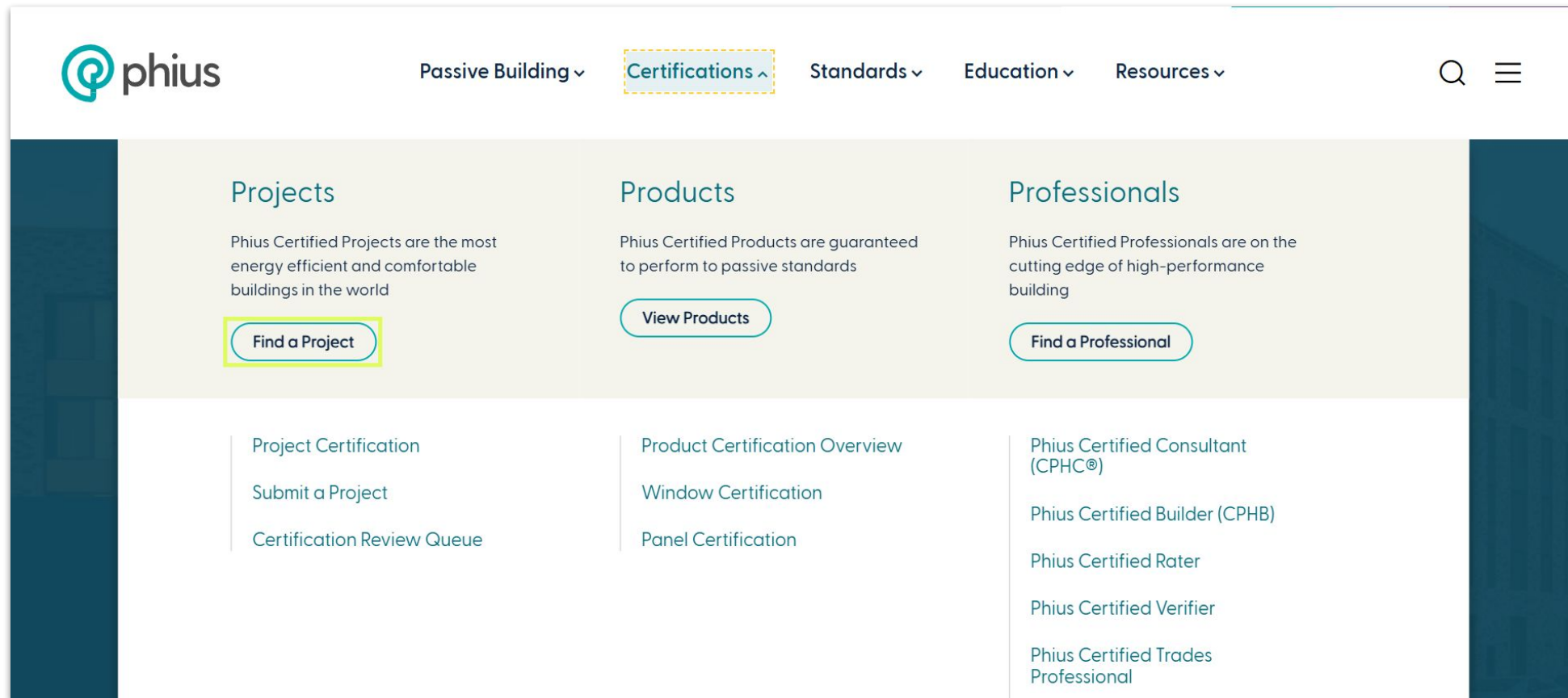
- What appears to be missing?
 - Specificity
 - Measurements/dimensions
 - Specific product data
 - R-values
 - More details
 - Don't worry, we have more coming!



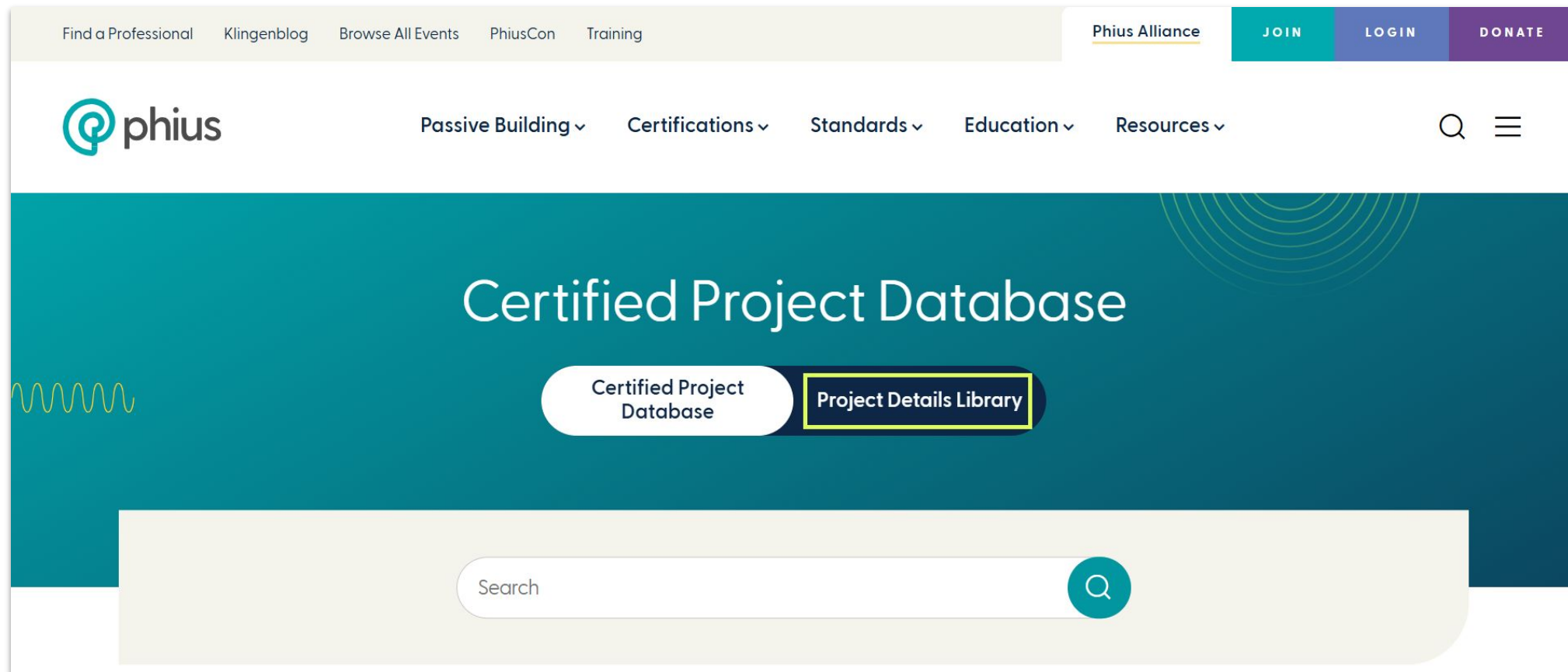
Future Project Details

- Current 13 are available to the public
- Future details will be available to Phius Alliance members only
 - [Join the Phius Alliance](#)
- Interested in submitting your project to the Phius Project Details Library?
 - [Phius Project Details Library Interest Form](#)

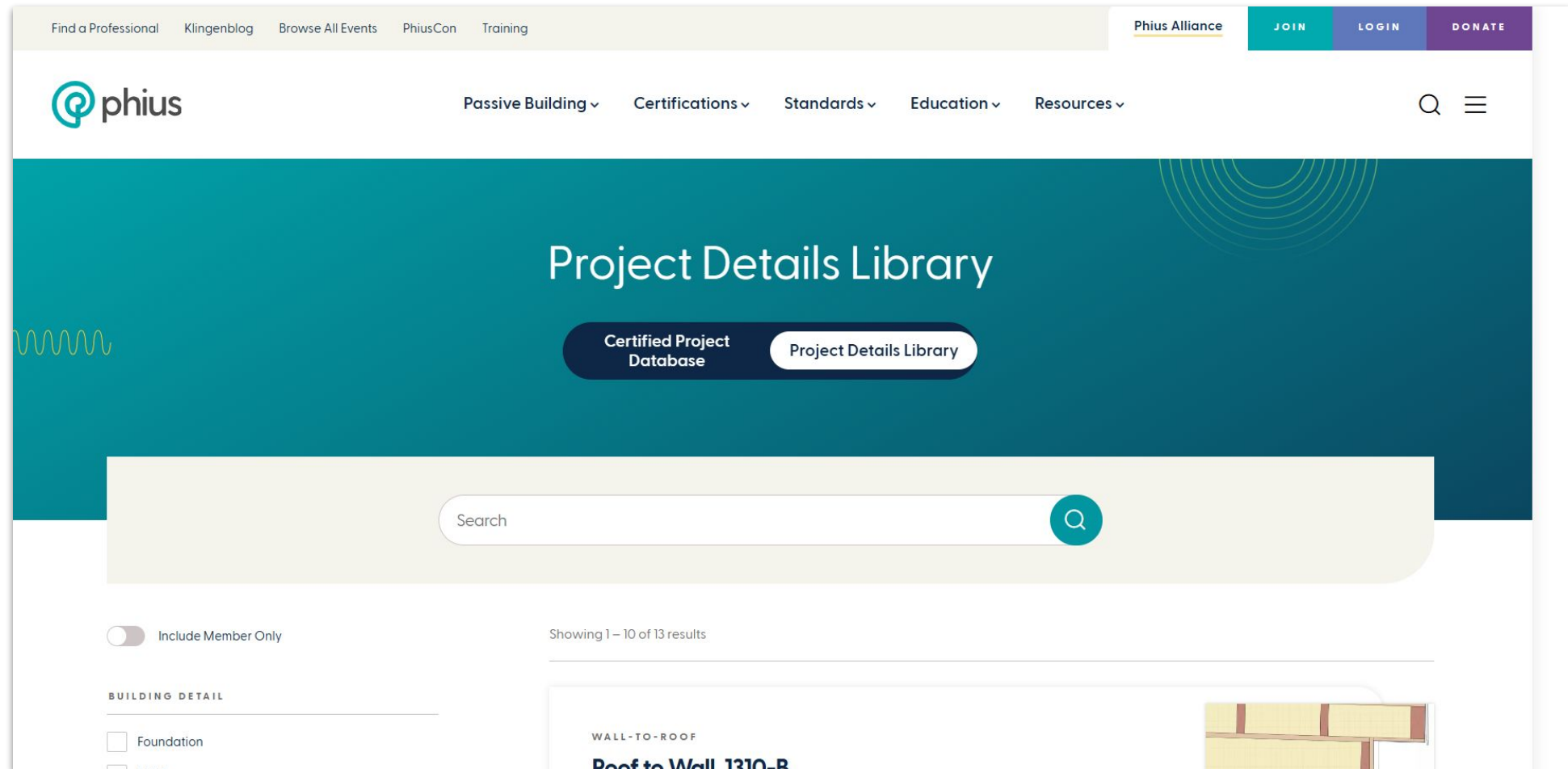
Navigating the Phius Project Details Library



Navigating the Phius Project Details Library



Navigating the Phius Project Details Library



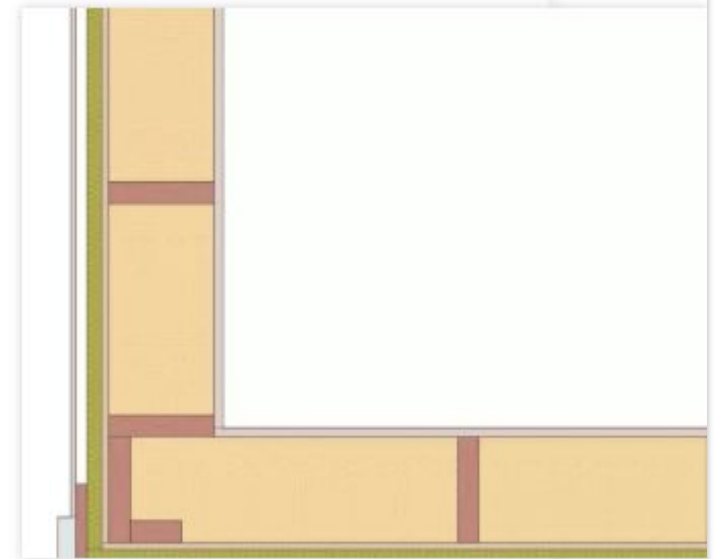
Sample Project Tutorial

WALL-TO-WALL CORNER PLAN

Wall to Wall Corner Plan, 1348-C

Multifamily • New Construction

4C - Mixed - Marine



Contact Information

Zoe Rader

Building Certification Associate

Policy Specialist

zrader@phius.org